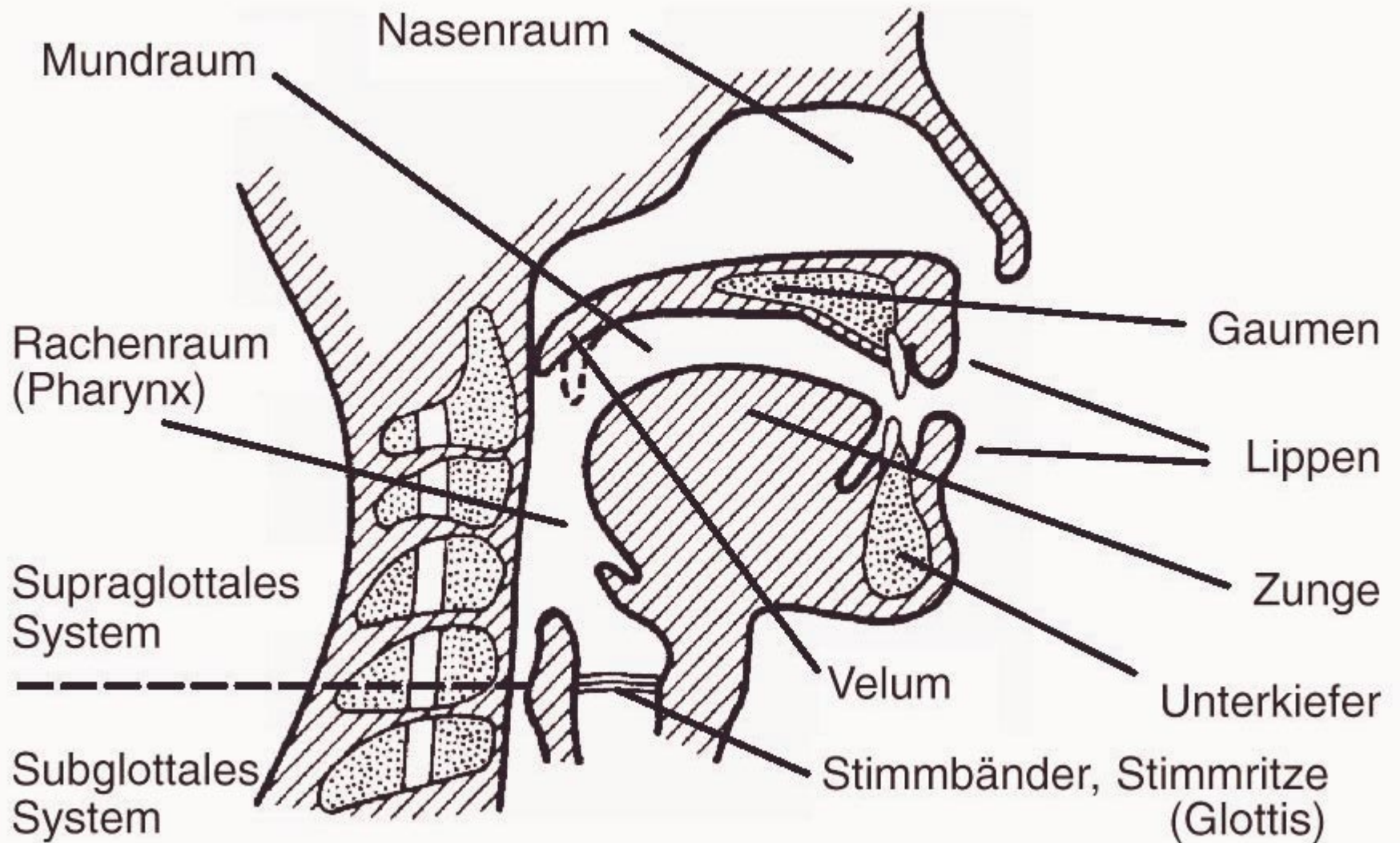


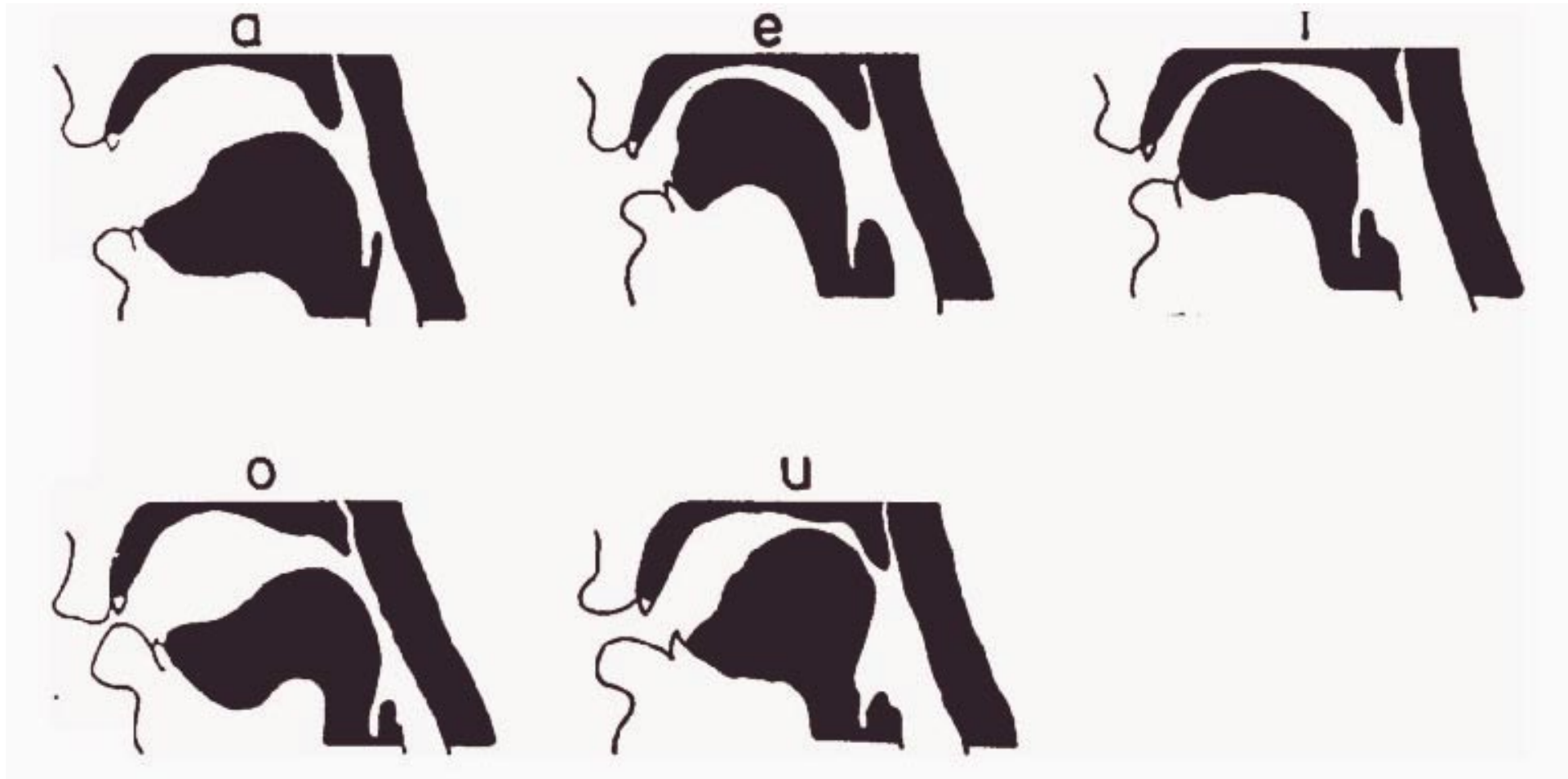
# Abbildungen zur Sprachkompression mit dem Quelle-Filter-Modell (LPC)

Prof. Hansjörg Mixdorff

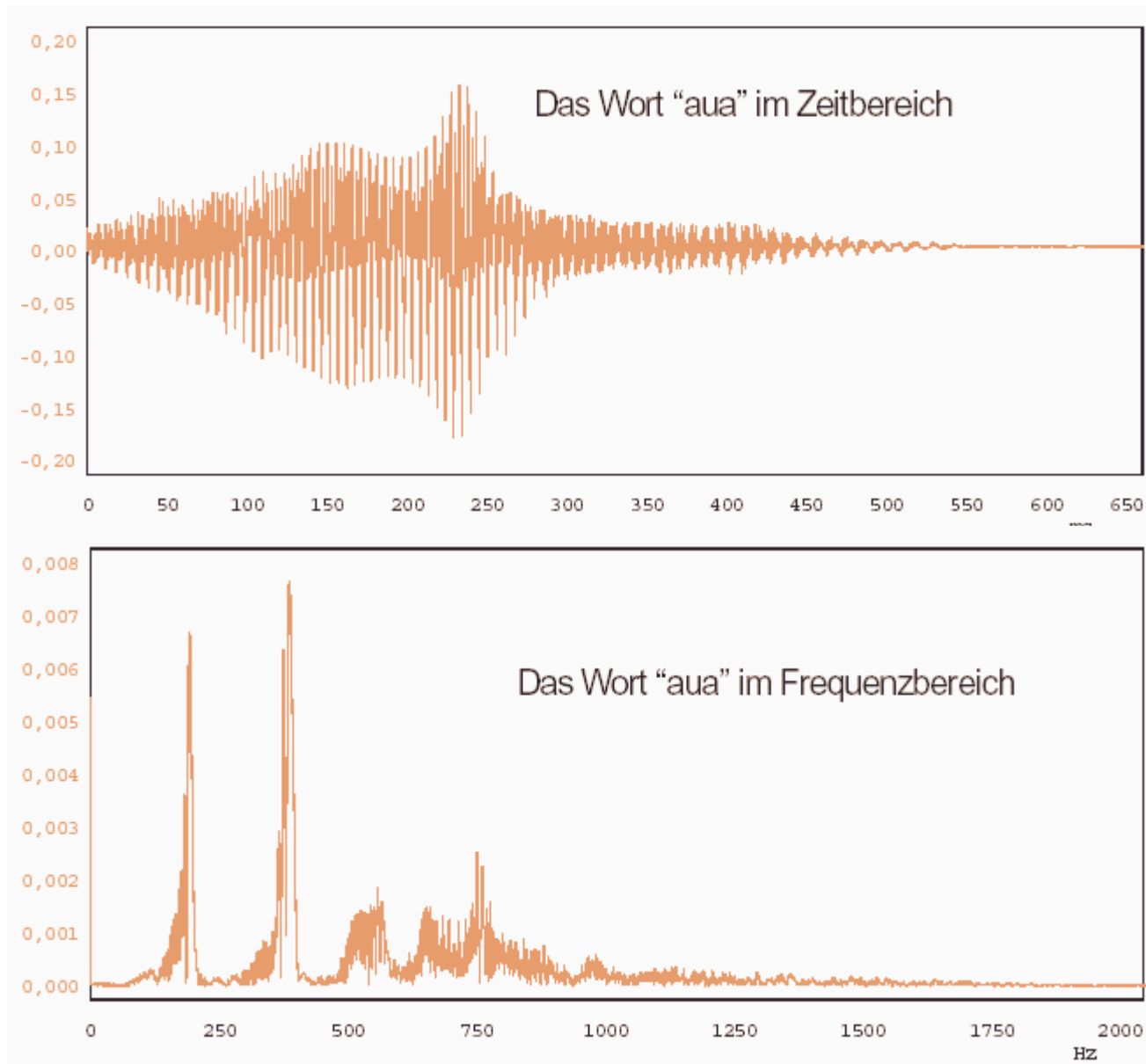
# Vokaltrakt



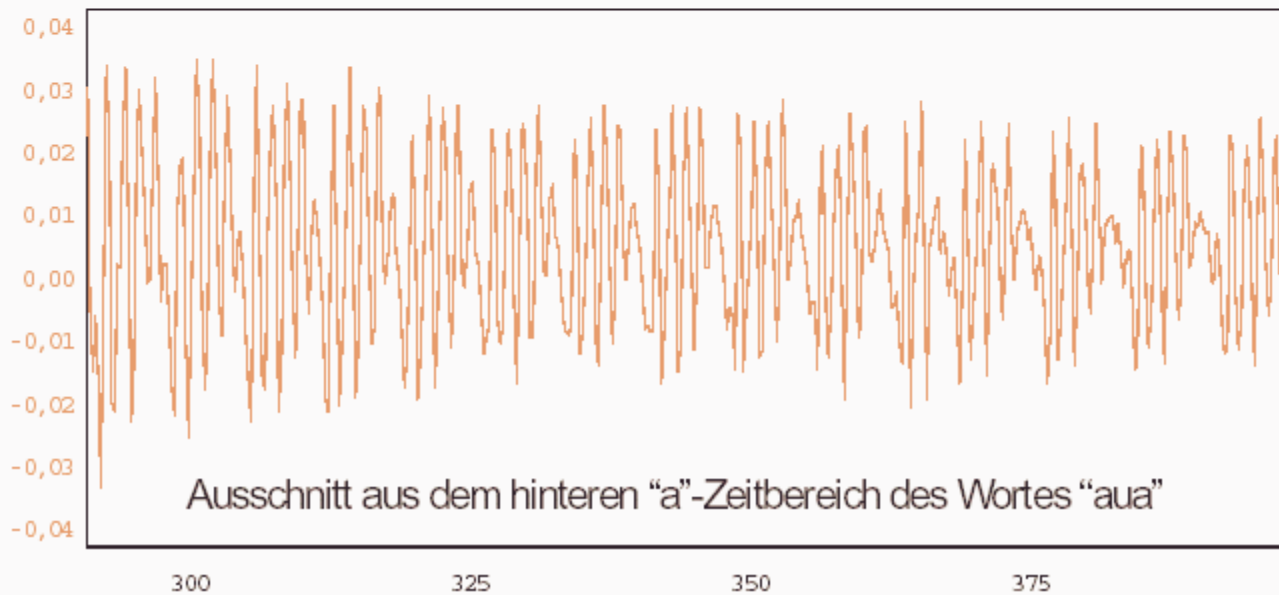
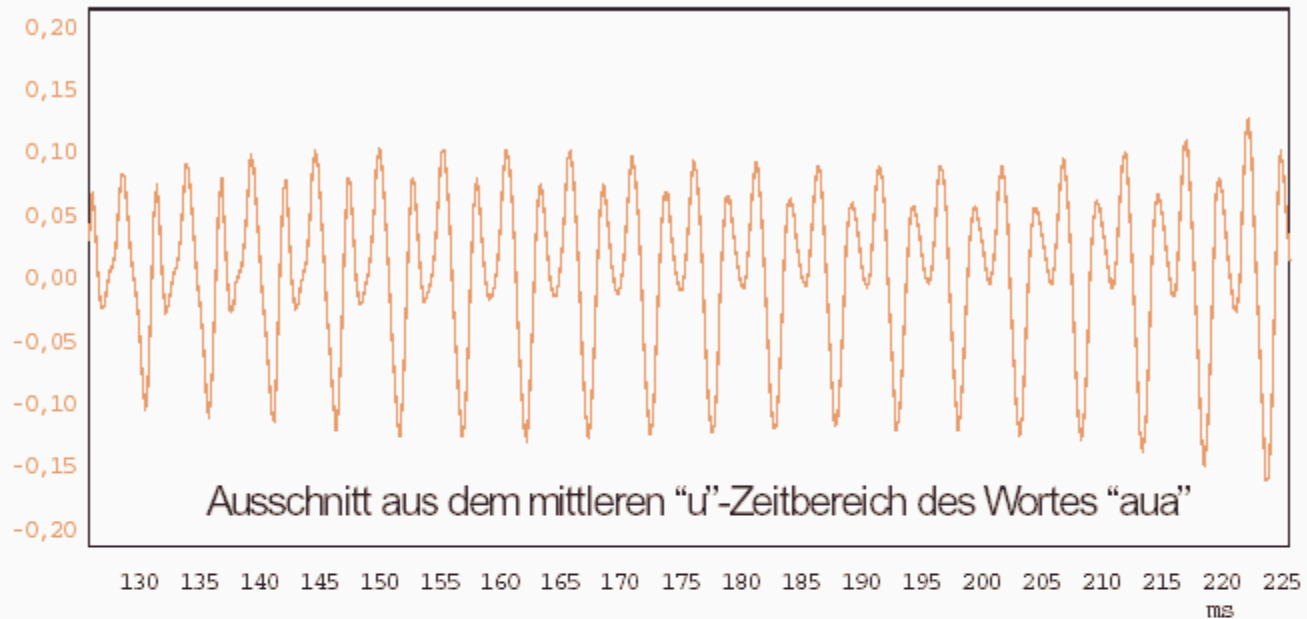
# Querschnitte für verschiedene Vokale



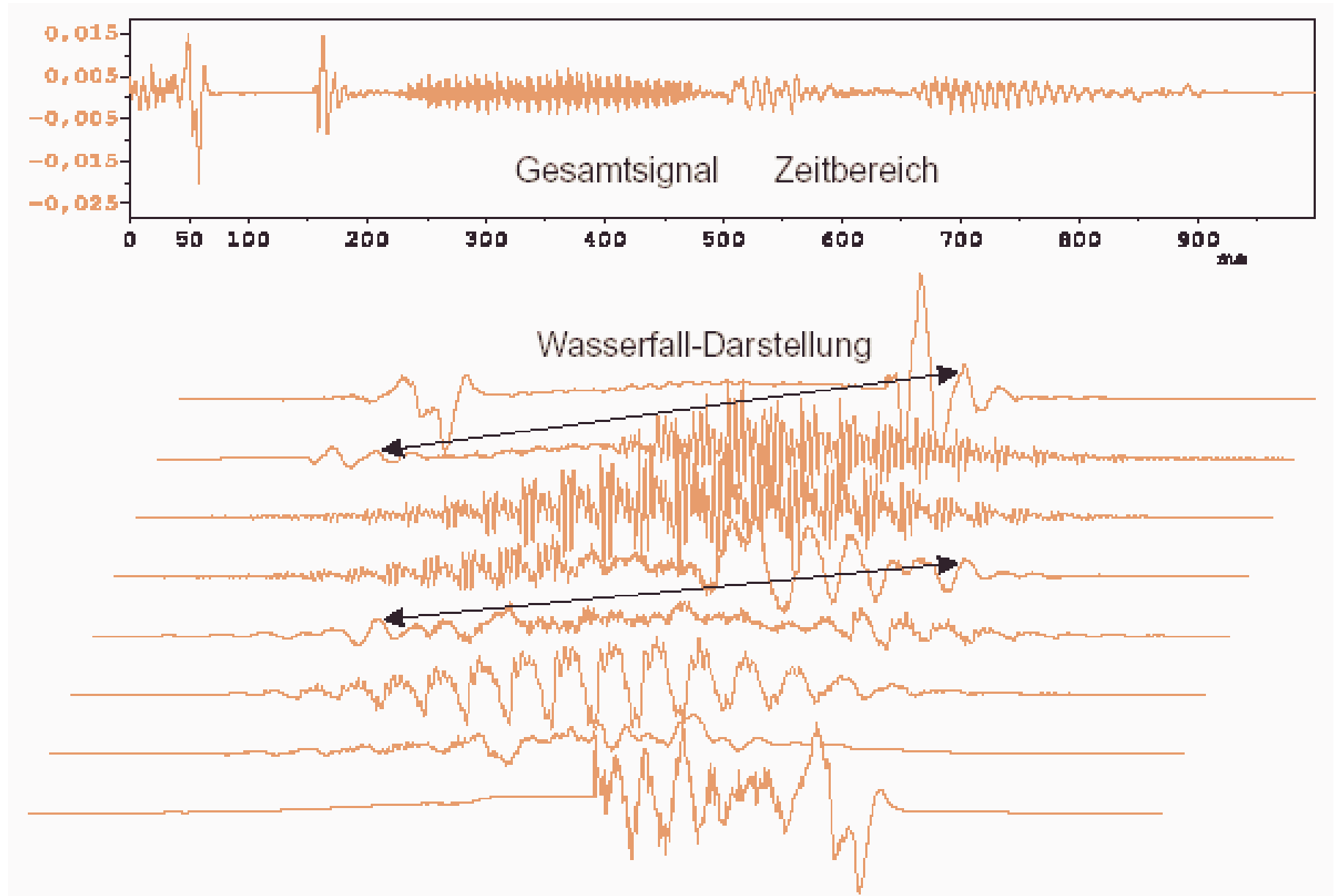
# Sprachsignal im Zeit-und Frequenzbereich



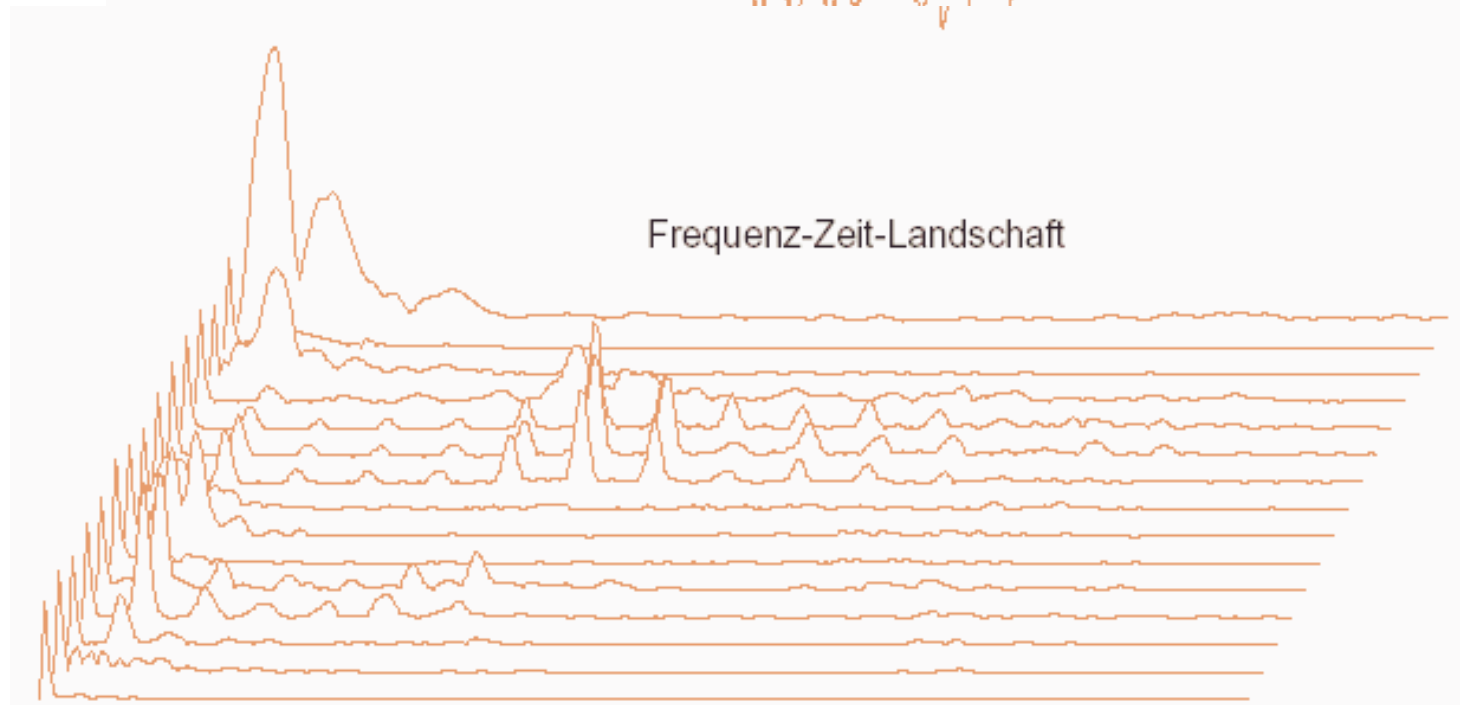
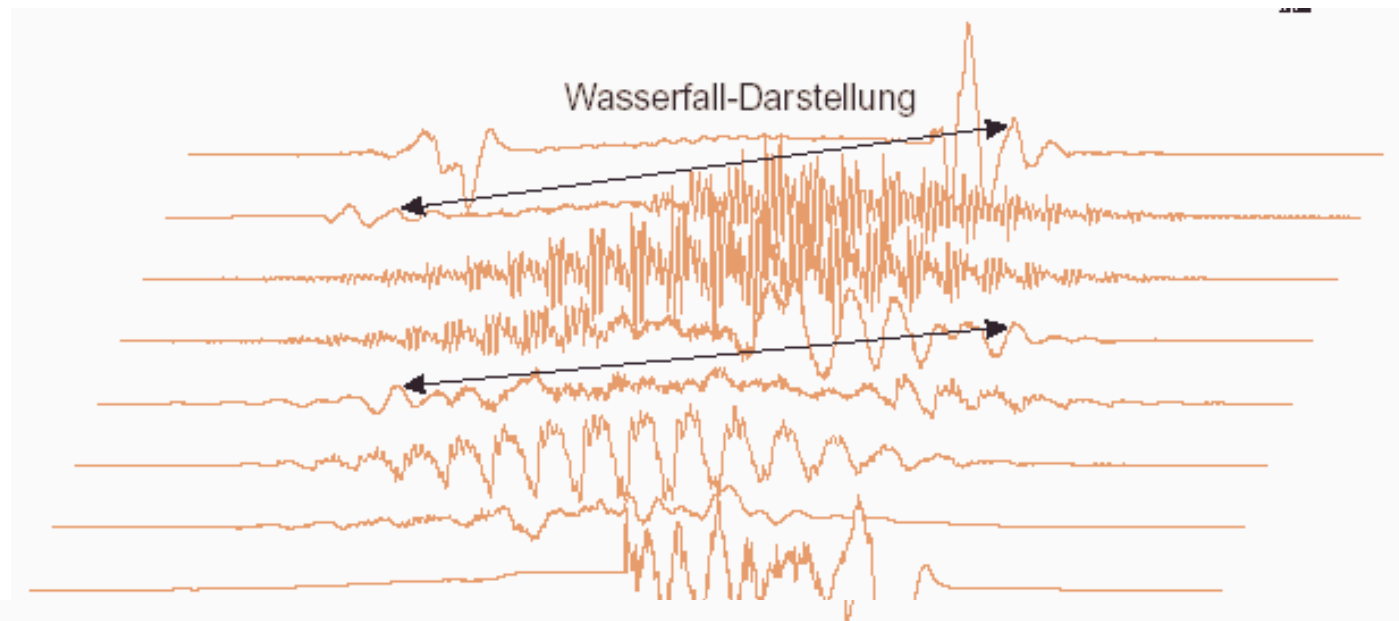
# Detailansichten



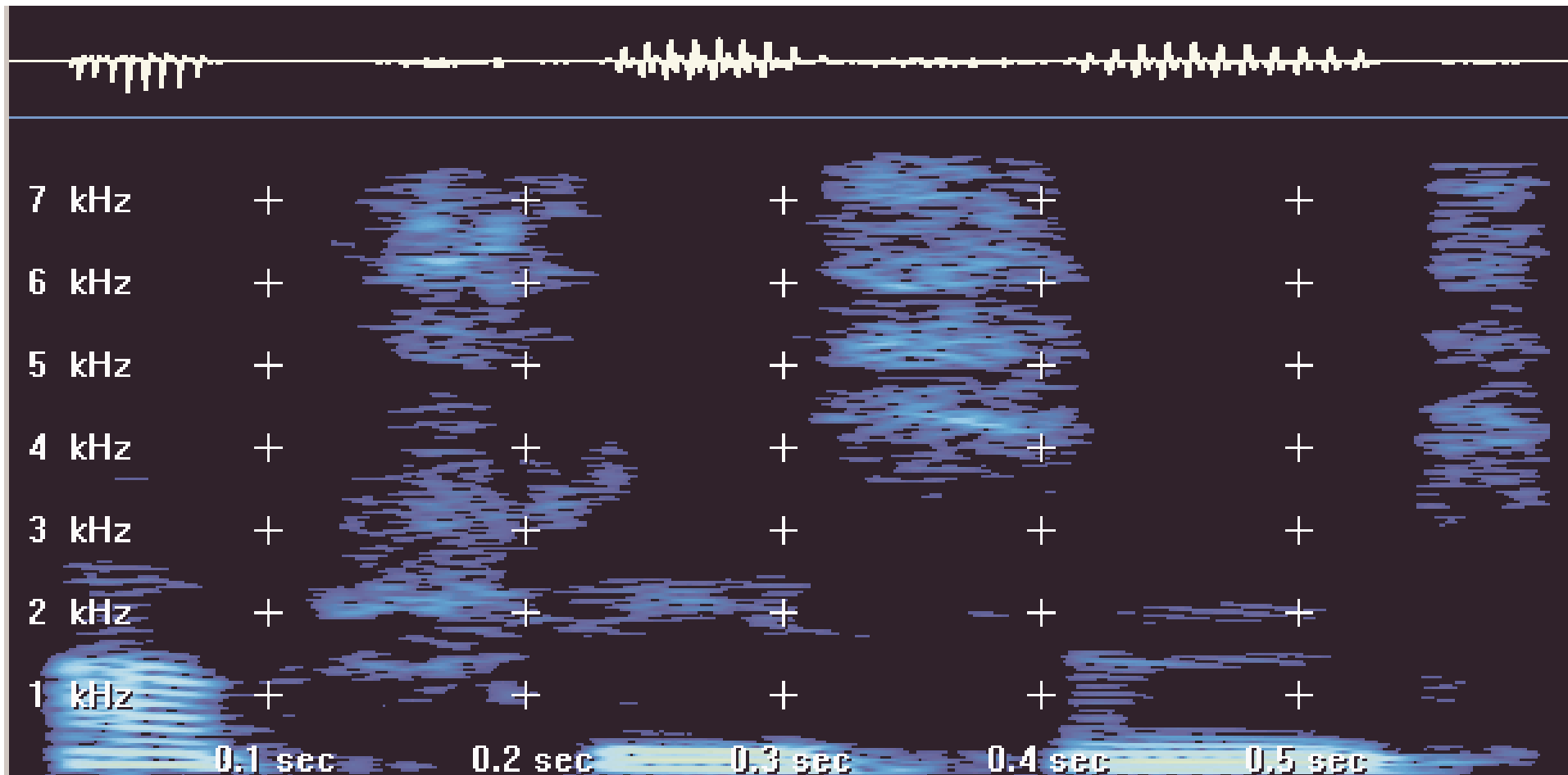
# Das Wort ‚Sprache‘, Frames



# Frameweise Verarbeitung

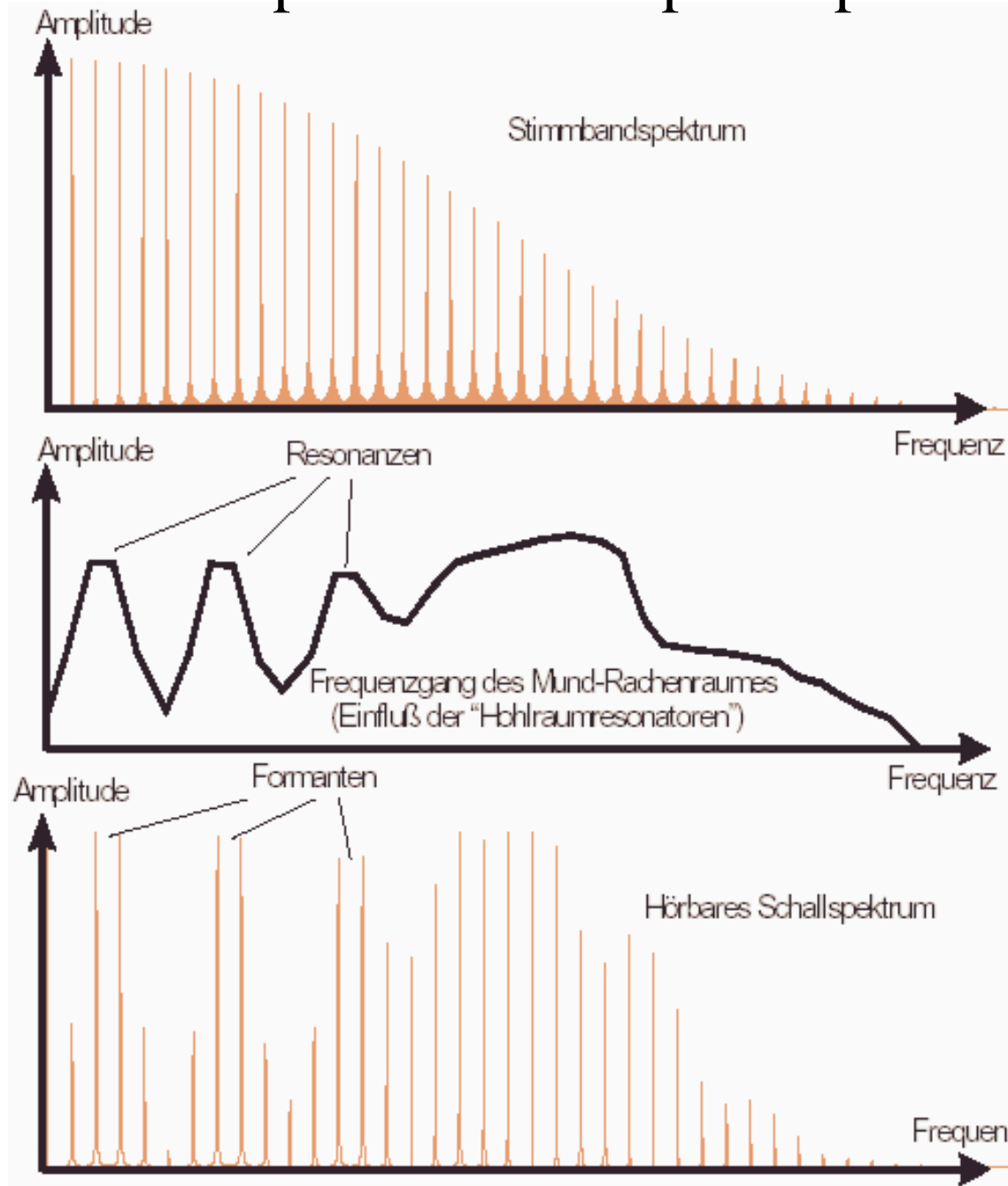


# Spektrogramm (GRAM), Wort: ‚abschließend‘

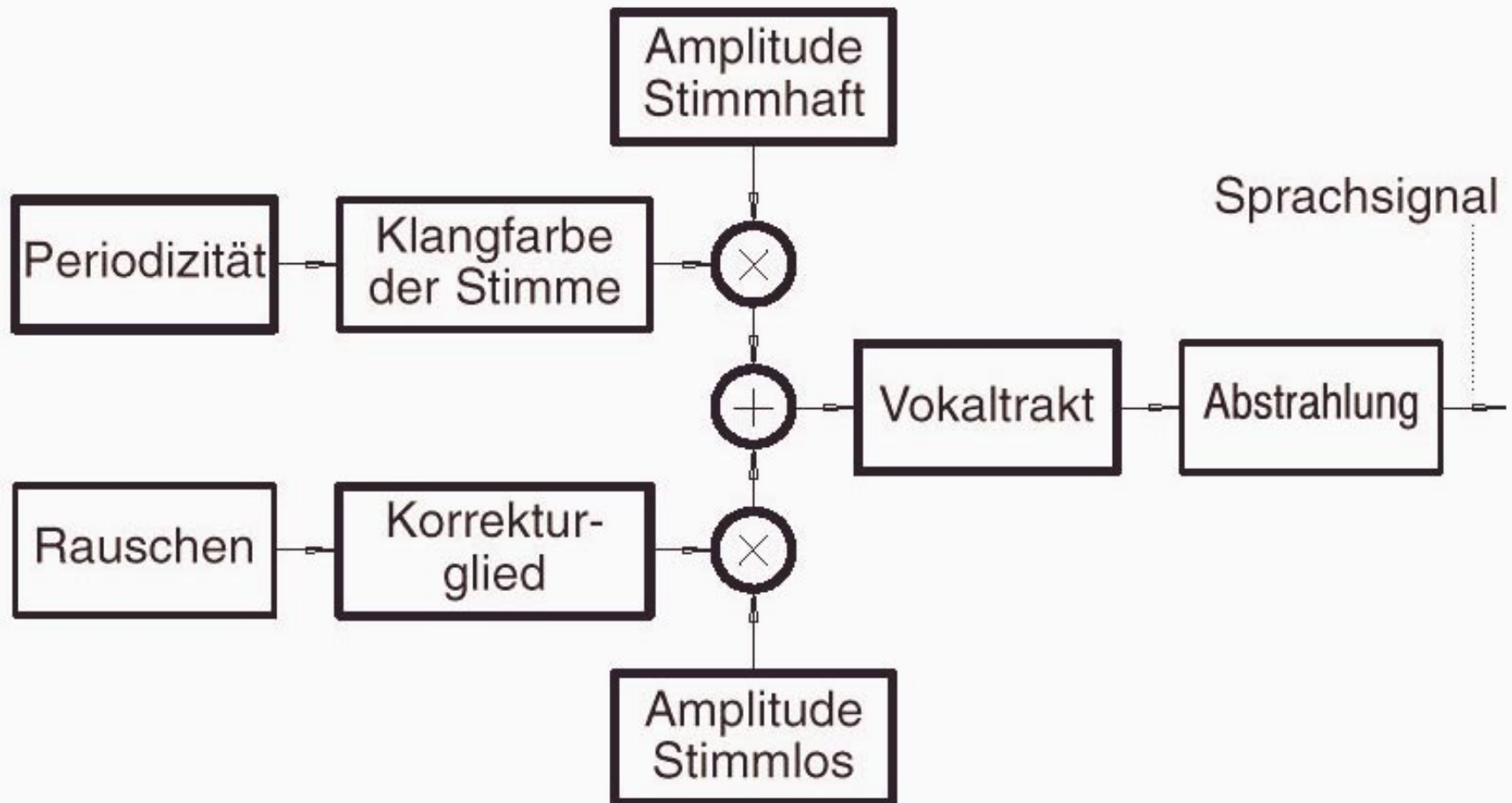




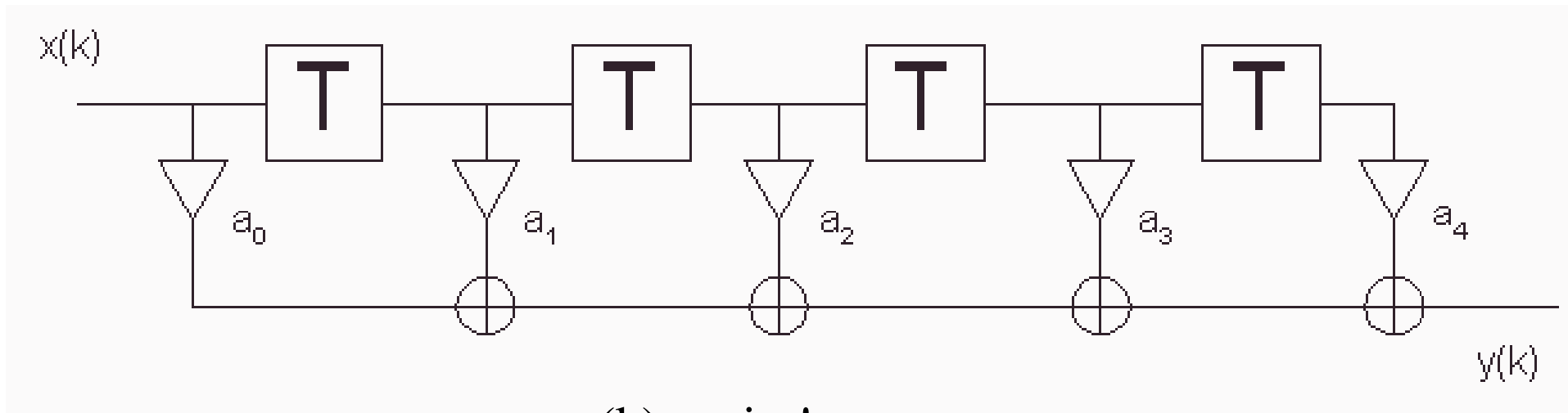
# Glottales Spektrum und Sprachspektrum



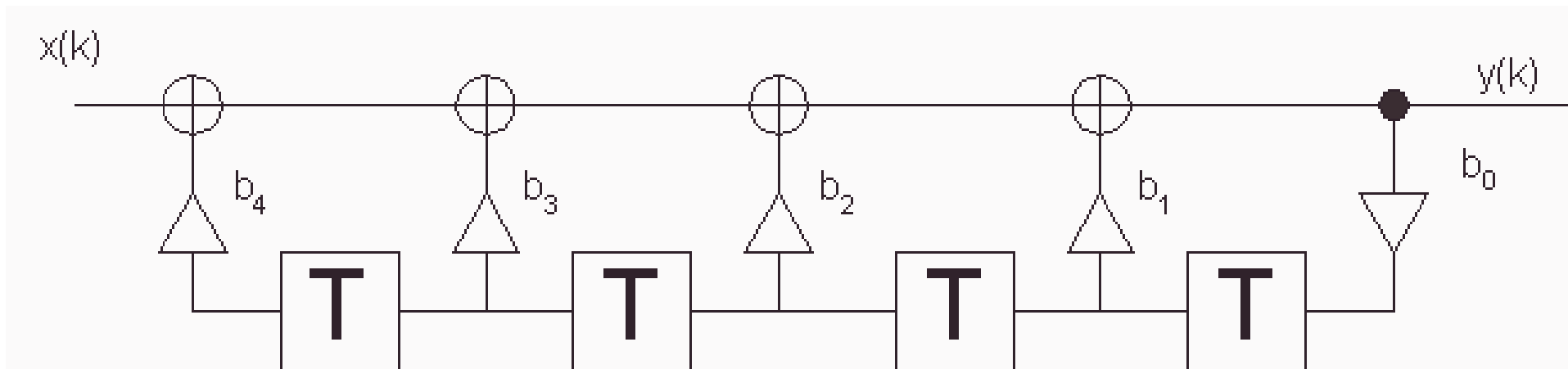
# Quelle-Filter-Modell



# Analysefilter (oben) und Synthesefilter (unten)



$y(k) = \min !$



$$b_0 = a_0, b_1 = a_1, b_2 = a_2, b_3 = a_3, b_4 = a_4$$